

Aldreds
Estate Agents



9 Jubilee Terrace

Caister-On-Sea, Great Yarmouth, NR30 5DE

£135,000



9 Jubilee Terrace

Caister-On-Sea, Great Yarmouth, NR30 5DE

Aldreds are pleased to offer this attractively presented, modernised mid terraced house situated in a popular location close to the heart of this well serviced coastal village. The property would make an ideal first home or investment purchase with accommodation comprising of a lounge, kitchen/dining room, ground floor bathroom and utility. On the first floor there are two double bedrooms and a cloakroom/bedroom 3. Outside there are front and rear gardens with a southerly facing rear aspect. The property also benefits from double glazed windows and gas central heating.

Lounge

12'3" x 11'0" (3.75 x 3.36)

Including the chimney breast with moulded fire surround, side display and built in storage, wall mount tv point, radiator, part double glazed pvc entrance door, double glazed window to front aspect, door to:

Inner Lobby

Stairs to first floor, door to:

Kitchen/Dining Room

12'1" x 10'11" (3.70 x 3.33)

Fitted kitchen with cream wall and matching base units with wood effect work surfaces over, white ceramic sink unit, integrated slimline dishwasher, part tiled walls, Karndean flooring, radiator, built in double oven with four ring ceramic hob and integrated extractor hood over, under stairs cupboard, double glazed door to rear, door to:

Bathroom

10'7" x 7'1" (3.24 x 2.16)

Curved panelled bath with mains fed shower fitting over, low level wc, pedestal wash basin, part tiled walls, radiator, frosted double glazed window to side aspect, open access to:

Utility Room

7'6" x 4'2" (2.30 x 1.29)

Fitted work surface with inset single drainer sink unit, space and plumbing for a washing machine, radiator, double aspect double glazed windows.

First Floor Small Landing

Doors leading off to:

Bedroom 1

12'1" x 10'11" (3.70 x 3.35)

Including the chimney breast, radiator, double glazed window to front aspect.





Bedroom 2

12'1" x 11'3" (3.70 x 3.45)

Plus walk in wardrobe cupboard and including the chimney breast, radiator, double glazed window to rear aspect, door to:

Cloakroom/Bedroom 3

8'1" x 7'5" (2.47 x 2.28)

Currently used as a cloakroom with a low level wc and vanity unit with inset wash basin but could easily be converted to a small third bedroom, double glazed window to rear aspect, radiator, gas boiler.

Outside

The property is accessed off of a private road with a small forecourt to the front. To the rear is a south facing garden which is laid with a patio and lawn. The garden is enclosed with a gate leading to a rear service passageway across the neighbouring properties.

Tenure

Freehold

Services

Mains water, electric, gas and drainage.

Council Tax

Great Yarmouth Borough Council - Band 'A'

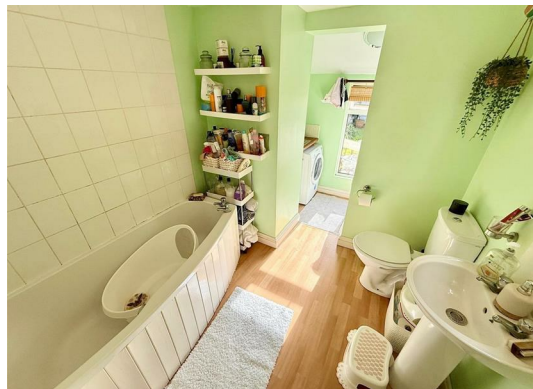
Location

Caister-on-Sea is a popular coastal village approximately 3 miles north of Great Yarmouth * There are a variety of local shops, pubs and restaurants * Post Office * First, Middle and High schools * Golf Course * Regular bus services to Great Yarmouth * Caister also boasts Roman Ruins * a sandy beach and its own Historic Castle.

Directions

From the Yarmouth office head north along the A149 Caister Road, continue past the Yarmouth Stadium, at the roundabout turn right into Yarmouth Road, turn right into Jubilee Terrace where the property can be found on the right hand side.

Ref: Y12634/02/26/CF



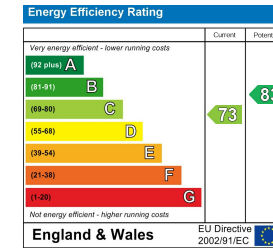
Floor Plan



Area Map



Energy Efficiency Graph



Viewing

Please contact our Aldreds Great Yarmouth Office on 01493 844891 if you wish to arrange a viewing appointment for this property or require further information.

Disclaimer

These particulars are issued on an understanding that all negotiations shall be conducted through Messrs. Aldreds. Please note: Messrs. Aldreds for themselves and for the vendors or lessors of this property whose agents they are given notice that: 1. Particulars are set out as a general outline only for guidance of intending purchasers or lessees, and do not constitute nor constitute part of, an offer or contract. 2. All descriptions, dimensions, references to condition and necessary permissions for use and occupation, and other details are given without responsibility and any intending purchasers or tenants should not rely on them as statements or representations of fact but must satisfy themselves by inspection or otherwise as to the correctness of each of them. 3. No person in the employment of Messrs. Aldreds has any authority to make or give any representation or warranty whatever in relation to this property. 4. If you are proposing to visit the property and are travelling some distance please check with Aldreds on the issue of availability prior to travelling. 5. Aldreds Property Consultants and associated services may offer additional services to the prospective purchaser for which they will be entitled to receive a commission.

Aldreds are pleased to be working with Mortgage Advice Bureau. They're an award-winning mortgage broker with over 1,400 advisers across the UK, and have access to over 12,000 mortgage products from over 90 lenders. Aldreds Estate Agents Ltd receive a commission of £200 on each completed case. Your home may be repossessed if you do not keep up repayments on your mortgage. There may be a fee for mortgage advice. The actual amount you pay will depend upon your circumstances. The fee is up to 1%, but a typical fee is 0.3% of the amount borrowed. Mortgage Advice Bureau is a trading name of Mortgage Seeker Limited which is an appointed representative of Mortgage Advice Bureau Limited and Mortgage Advice Bureau (Derby) Limited which are authorised and regulated by the Financial Conduct Authority. Mortgage Seeker Limited Registered Office: Lovewell Blake, Sixty Six North Quay, Great Yarmouth, Norfolk, NR30 1HE. Registered in England Number: 03721415. 6. Potential purchasers should check with their providers that the broadband and mobile phone coverage they would require is available.

17 Hall Quay, Great Yarmouth, Norfolk, NR30 1HJ

Tel: 01493 844891 Email: yarmouth@aldreds.co.uk <https://www.aldreds.co.uk/>

Registered in England Reg. No. 08945751 Registered Office: 17 Hall Quay, Great Yarmouth, Norfolk NR30 1HJ

Directors: Mark Duffield B.S.c. FRICS. Dan Crawley MNAEA Paul Lambert MNAEA